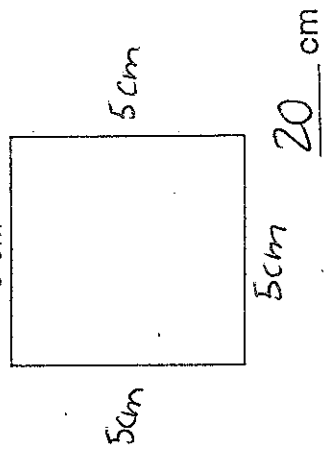
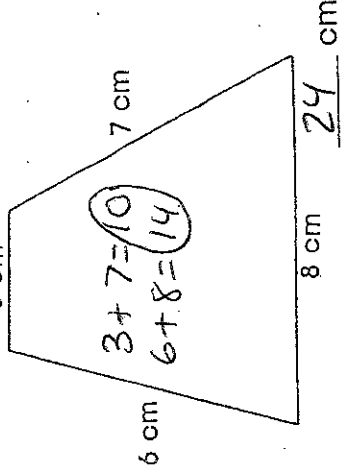


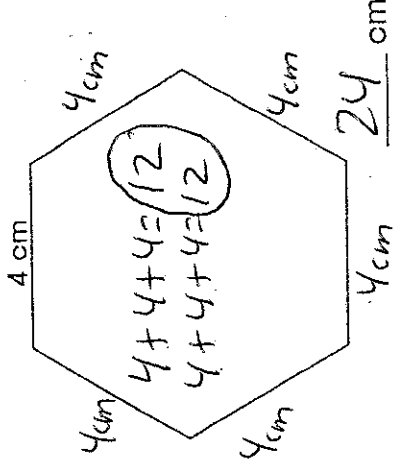
4



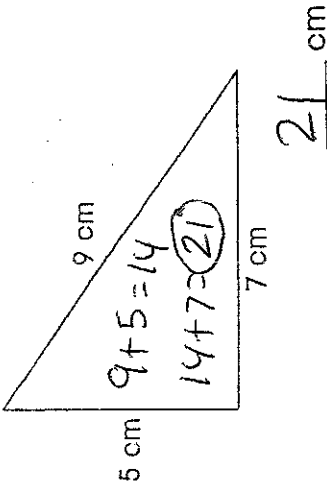
5



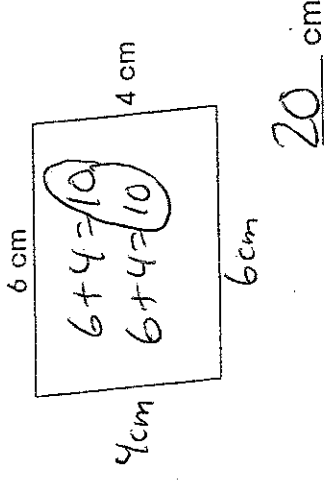
6



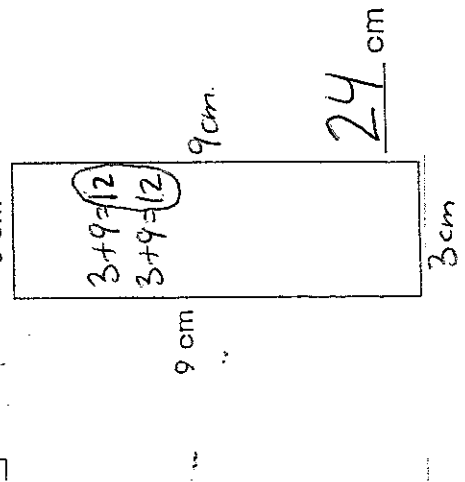
11



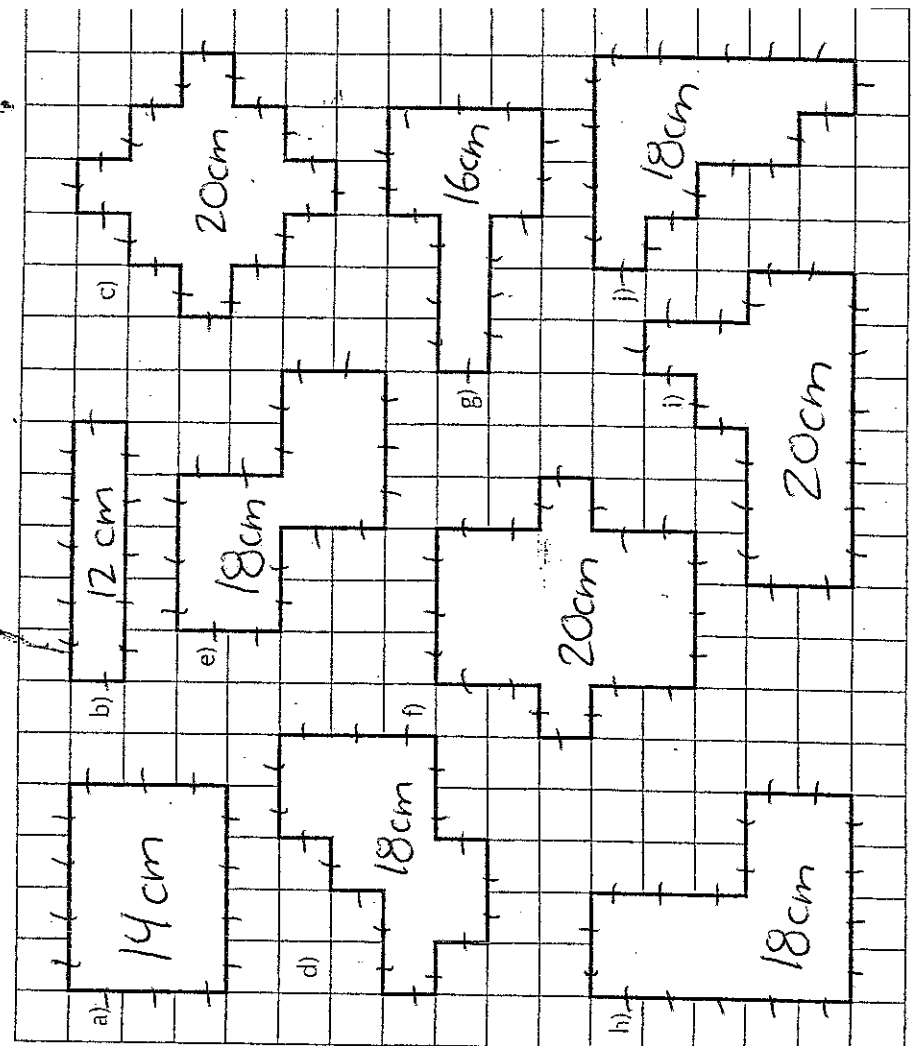
2



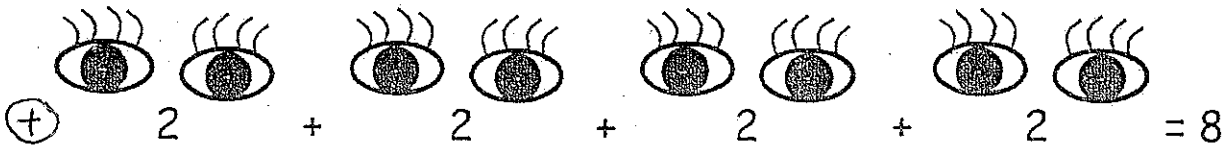
3



Calcule le périmètre des formes suivantes.
Inscris ta réponse en centimètres à l'intérieur. Chaque case vaut 1 cm.

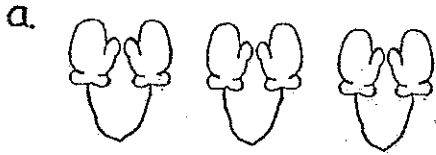


Regardez ces dessins. Posez l'opération de la façon suivante.



4 groupes de 2 = 8

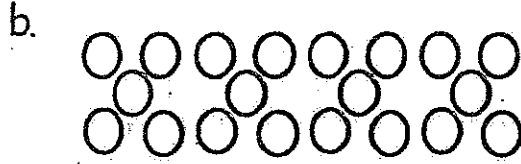
$\otimes \quad 4 \times 2 = 8$



$\oplus \quad \underline{2 + 2 + 2} = \underline{6}$

3 groupes de 2 = 6

$\otimes \quad \underline{3 \times 2} = \underline{6}$



$\oplus \quad \underline{5 + 5 + 5 + 5} = \underline{20}$

4 groupes de 5 = 20

$\otimes \quad \underline{4 \times 5} = \underline{20}$



$\oplus \quad \underline{4 + 4} = \underline{8}$

2 groupes de 4 = 8

$\otimes \quad \underline{2 \times 4} = \underline{8}$



$\oplus \quad \underline{2 + 2 + 2 + 2 + 2} = \underline{10}$

5 groupes de 2 = 10

$\otimes \quad \underline{5 \times 2} = \underline{10}$

2. Représente les multiplications suivantes à l'aide d'un dessin.

a) $2 \times 6 = \underline{12}$



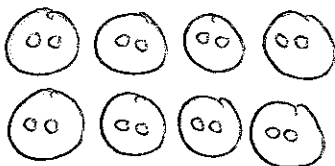
b) $3 \times 3 = \underline{9}$



c) $5 \times 1 = \underline{5}$



d) $8 \times 2 = \underline{16}$



e) $4 \times 3 = \underline{12}$



f) $3 \times 4 = \underline{12}$

